

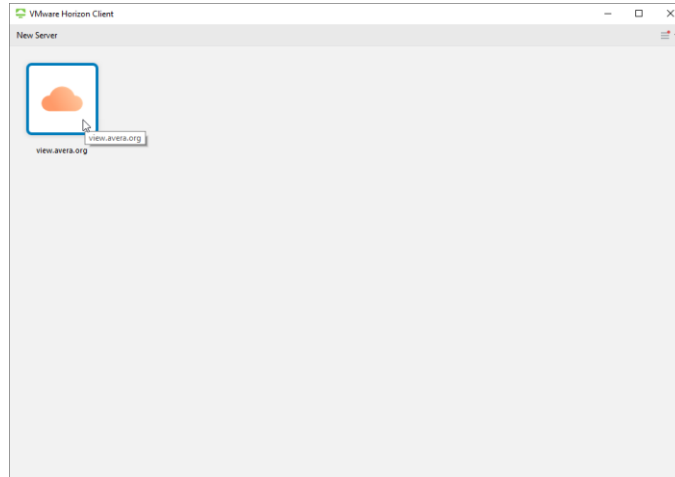
VMware – Selecting Multiple Monitors

Instructions to setup multiple displays in VMWare and/or Remote Desktop Connection.

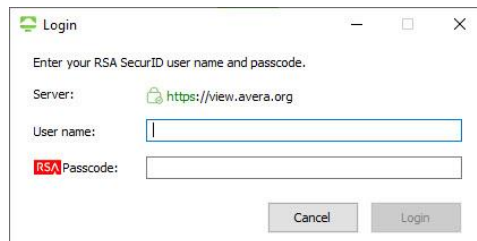
Note that you will need both monitors functional and correctly orientated in Windows for them to work correctly in VMWare and Remote Desktop.

VMware – Selecting Multiple Monitors for Display

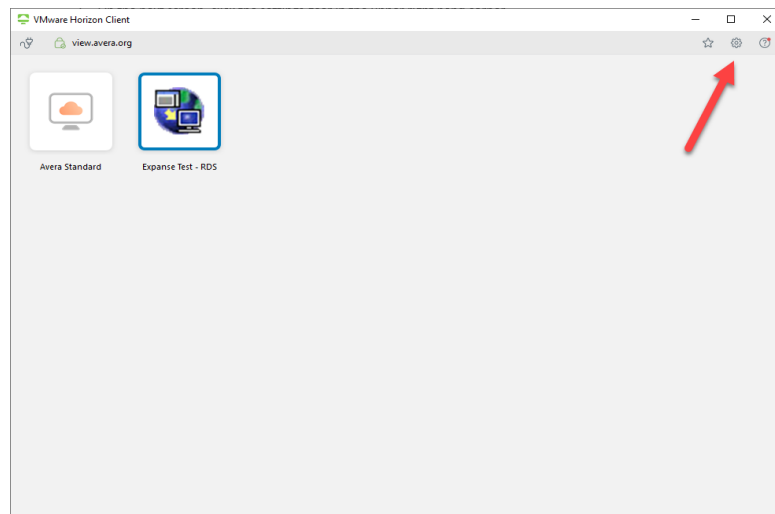
1. Open your VMware Horizon Client and click on the view.avera.org cloud.



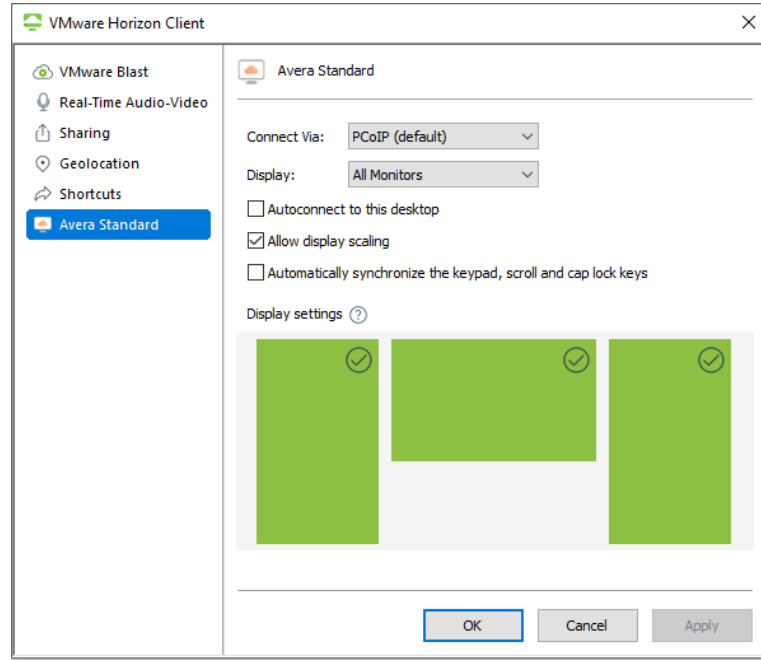
2. Log in with your RSA credentials



3. In the next screen, **before** selecting the Avera Standard, click the settings gear in the upper right hand corner.



- Click Avera Standard on the left hand pane. Set the Display option to “All Monitors” and ensure the checkbox is selected for “Allow display scaling” and place a check mark in each of your screens so they turn green in color.

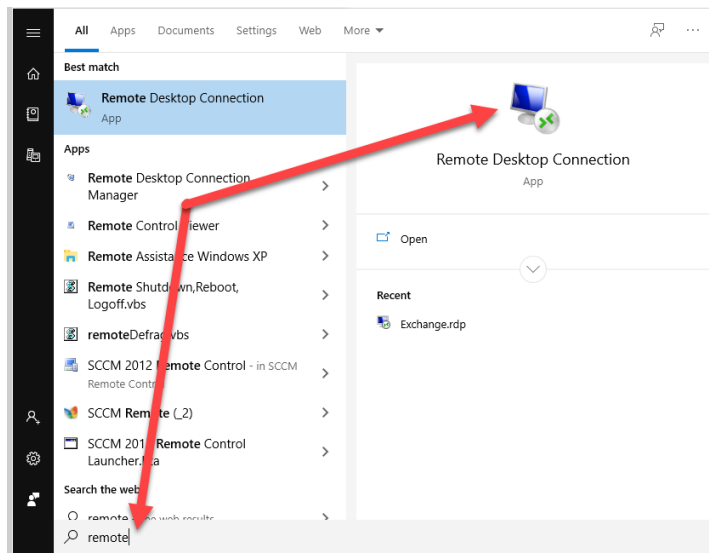


5.

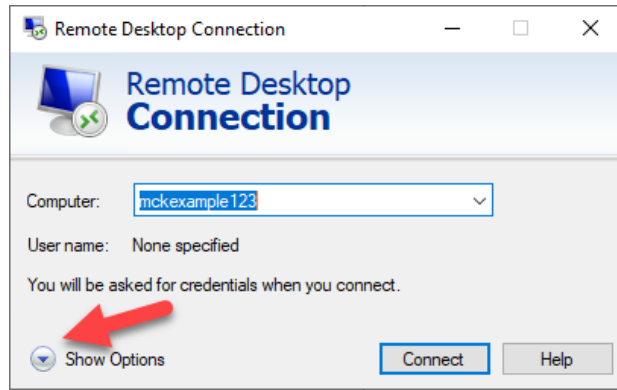
- Now when you click the Avera Standard, VMware will open on all the monitors you have selected

Remote Desktop Connection – Selecting Multiple Monitors for Display

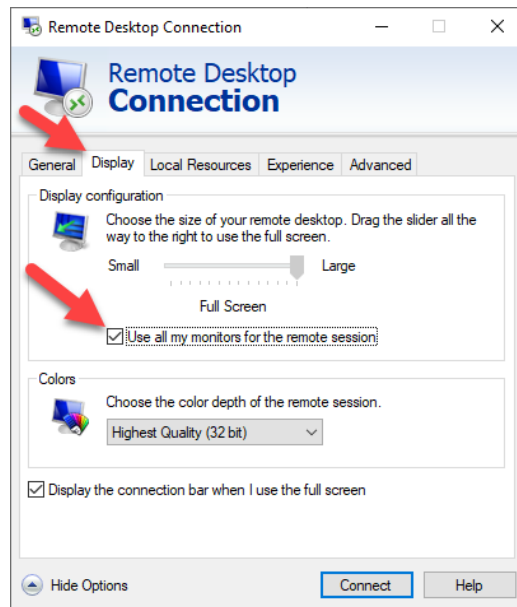
- Search for and open Remote Desktop Connection



2. Before connecting, click the Show Options



3. Navigate to the Display tab and select the checkbox stating “Use all my monitors for the remote session”.



4. Now when you click Connect, and sign in, both monitors should be displayed